

7

Whipple Museum of the History of Science

Free School Lane CB2 3RH

01223 330906

www.hps.cam.ac.uk/whipple

FREE entry

Open Mon to Fri 12.30 – 4.30

Closed Bank Holiday Mondays



Discover a fascinating array of scientific instruments dating from the Middle Ages to the present day. Cambridge has long been a centre for scientific work. Microscopes, telescopes and laboratory equipment demonstrate the vitality of past science, while the collections of pocket calculators and slide rules reflect how scientific instruments are important to us all.

8

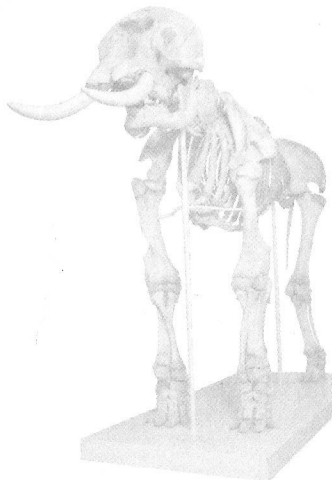
Museum of Zoology

Downing Street CB2 3EJ

www.museum.zoo.cam.ac.uk

This museum is now closed for redevelopment and will reopen in 2016

Throughout the museum's refurbishment work there will continue to be a programme of public events for all to enjoy; details of these can be found on the museum's website and Facebook page. You can also keep up to date with the museum's development through our blogs Inside the Cocoon, Animal Bytes and Store Stories. Some of the fascinating objects and specimens from our collections will be displayed at other museums in Cambridge and across the region, details are on our website.



9

Cambridge University Botanic Garden

Gates at Brookside and Station Rd CB2 1JE

01223 336265

www.botanic.cam.ac.uk

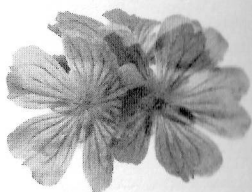
Adults £4.50 (concessions and gift aid entry available); accompanying children (0-16) are free.

Open daily at 10;

April to Sept 10 – 6

Feb, March & Oct 10 – 5

Jan, Nov & Dec 10 – 4



Discover plants from all over the world in 40 acres of beautiful gardens and glasshouses, less than a mile south of the city centre. Founded in 1846 by Professor John Henslow, mentor to Charles Darwin, this heritage-listed landscape is a treasure trove of over 8,000 plant species, including nine national collections and a wonderful arboretum. Highlights include the Winter Garden, the Rock Garden, historic Systematic Beds, the Dry Garden and the new Cory Lawn landscape. The magnificent Glasshouse Range is home to diverse habitats ranging from arid lands of architectural cactus to flamboyant tropical rainforests. The Garden hosts a range of events, family activities, tours and lifelong learning courses. Young explorer backpacks are available to borrow from the ticket offices – perfect for all budding Darwins.

10

Cambridge Science Centre

18 Jesus Lane CB5 8BQ

01223 967965

www.cambridgesciencecentre.org

Admission prices apply, see website for details

During school term:

Tue – Fri 1 – 5, Sat & Sun 10 – 5,

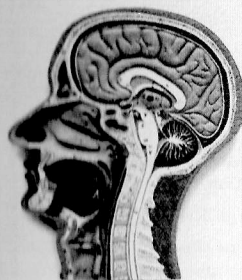
Closed Mondays

During Cambridgeshire school

holidays: Mon – Sun 10 – 5

Open Bank Holiday Mondays

Visit a place of scientific exploration for families and adults. The Cambridge Science Centre is packed with amazing interactive exhibits, lively shows and inspiring workshops, and is located in the centre of Cambridge. Get really hands-on with science and technology, and make discoveries of your own! Our wonderful staff love to talk all things science – they are ready to answer your questions and help you explore our exhibits – just ask. Check our website for more details of our exciting programme of events, shows and workshops for all ages.



Other Museums in Cambridge

11

Cambridge Museum of Technology

Cheddars Lane CB5 8LD

info@museumoftechnology.com

www.museumoftechnology.com

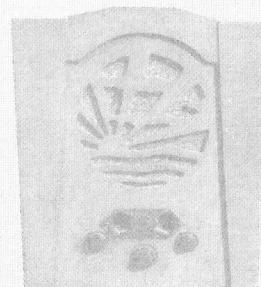
Admission prices apply, see website for details

Open Easter to Oct, Sun 2 – 5

and for various special events

Nov to Easter, first Sunday in

the month 2 – 5



Best known for its landmark chimney which towers over Riverside, the museum is home to a fascinating range of locally produced technology. Massive pumping engines and intricate scientific instruments all jostle for your attention. The museum's home in Cambridge's Victorian pumping station is an exhibit in itself. Back in the 1890s it provided an ingenious solution to the town's two stinking problems: rubbish and sewage. We run a full programme of events throughout the year.

12

Museum of Cambridge

Castle Street CB3 0AQ

01223 355159

www.museumofcambridge.org.uk

Admission prices apply, see website for details

Open Tues to Sat 10.30 – 5

Sun & Bank Holiday Mondays 2 – 5



A vibrant gem of a museum which brings the colourful history of Cambridge to life. Each themed room in this 17th century building is filled with intriguing objects, some dating back to the 1600s. Discover the fascinating world of the fens and its folklore, and explore Cambridge home life, childhood and trades through a range of interactive displays. The museum offers temporary exhibitions, events and talks throughout the year along with a shop specialising in unique locally-made gifts.